



RIGHT TIME.  
PERFECT PLACE.

*A New Era of Meetings & Conventions*

*Circa*  
RESORT & CASINO.





*The time of your life.*

**34 FLOORS**

**982 PARKING SPACES**

**1.2M SQ FT PROPERTY**

**12 RESTAURANTS AND BARS**

**512 ROOMS & SUITES**

**STADIUM SWIM**

**8 STORY GARAGE**

**THE WORLD'S LARGEST SPORTSBOOK**



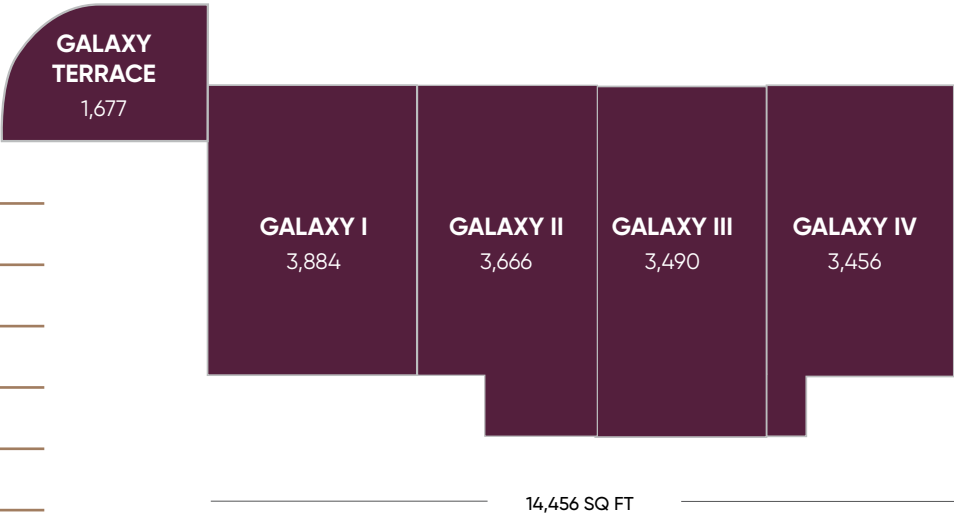
# BALLROOMS & MEETING SPACES



## GALAXY

### AT A GLANCE

- LARGEST BALLROOM
- 4 ADJOINING BALLROOMS
- 14,456 SQ FT
- ADJACENT TO OUTDOOR TERRACE
- BUILT IN AUDIO-VISUAL
- FULL RIGGING
- ACCESS TO PREFUNCTION SPACES





# BALLROOMS & MEETING SPACES



GALAXY BALLROOM	SQ FT	DIMENSIONS	HEIGHT	THEATER	CLASSROOM	ROUNDS	RECEPTION	CONFERENCE	U-SHAPE	HOLLOW SQUARE	EXHIBITS 10x10
GALAXY BALLROOMS	14,456	76' x 185'	24'	1,450	875	980	1,000	N/A	N/A	N/A	64
GALAXY BALLROOM I	3,844	74' x 53'	24'	385	245	260	260	N/A	N/A	N/A	15
GALAXY BALLROOM II	3,666	78' x 45'	24'	368	215	250	250	N/A	N/A	N/A	13
GALAXY BALLROOM III	3,490	78' x 43'	24'	330	200	220	240	N/A	N/A	N/A	11
GALAXY BALLROOM IV	3,456	73' x 45'	24'	368	215	250	250	N/A	N/A	N/A	13
BALLROOMS I, II	7,510	74' x 98'	24'	753	460	510	510	N/A	N/A	N/A	34
BALLROOMS II, III	7,156	78' x 88'	24'	698	415	470	490	N/A	N/A	N/A	30
BALLROOMS III, IV	6,946	74' x 88'	24'	698	415	470	490	N/A	N/A	N/A	30
BALLROOMS I, II, III	11,000	78' x 141'	24'	1,083	660	730	750	N/A	N/A	N/A	48
BALLROOMS II, III, IV	10,612	78' x 133'	24'	1,066	630	720	740	N/A	N/A	N/A	46
GALAXY TERRACE	1,677	34' x 48'	12'	N/A	N/A	80	80	N/A	N/A	N/A	N/A



# BALLROOMS & MEETING SPACES



## STARLITE

### AT A GLANCE

3 ADJOINING MEETING ROOMS

3,572 SQ FT IN TOTAL

BUILT IN AUDIO-VISUAL

FULL RIGGING

ACCESS TO PREFUNCTION SPACES

STARLITE I 1,207 sq ft	STARLITE II 1,165 sq ft	STARLITE III 1,200 sq ft
---------------------------	----------------------------	-----------------------------

3,572 SQ FT

STARLITE	SQ FT	DIMENSIONS	HEIGHT	THEATER	CLASSROOM	ROUNDS	RECEPTION	CONFERENCE	U-SHAPE	HOLLOW SQUARE	EXHIBITS 10x10
STARLITE MEETING ROOMS	3,572	43' x 87'	11'	360	210	216	264	N/A	N/A	N/A	18
STARLITE I	1,207	43' x 29'	11'	120	70	72	88	22	30	36	6
STARLITE II	1,165	43' x 28'	11'	120	70	72	88	22	30	36	6
STARLITE III	1,200	43' x 30'	11'	120	70	72	88	22	30	36	6
STARLITE I, II	2,372	43' x 57'	11'	240	140	144	176	44	50	60	12
STARLITE II, III	2,365	43' x 58'	11'	240	140	144	176	44	50	60	12



# BALLROOMS & MEETING SPACES

## CAROUSEL

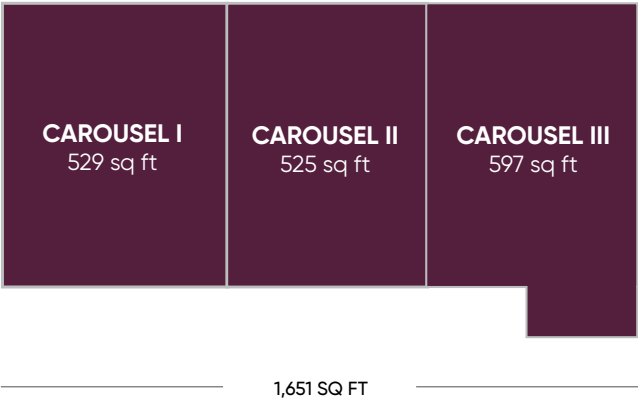
### AT A GLANCE

3 ADJOINING MEETING ROOMS

1,651 SQ FT IN TOTAL

BUILT IN AUDIO-VISUAL

ACCESS TO PREFUNCTION SPACES



STARLITE	SQ FT	DIMENSIONS	HEIGHT	THEATER	CLASSROOM	ROUNDS	RECEPTION	CONFERENCE	U-SHAPE	HOLLOW SQUARE	EXHIBITS 10x10
CAROUSEL MEETING ROOMS	1,651	27' X 60'	11'	172	100	108	128	34	40	52	9
CAROUSEL I	529	27' X 18'	11'	25	15	20	38	8	12	15	N/A
CAROUSEL II	525	27' X 21'	11'	30	15	20	45	8	12	15	N/A
CAROUSEL III	597	27' X 21'	11'	35	15	20	50	8	12	15	N/A
CAROUSEL I, II	1,054	27' x 39'	11'	90	50	60	60	25	25	32	4
CAROUSEL II, III	1,122	27' x 42'	11'	123	72	84	91	24	30	36	6

## AMBASSADOR

### AT A GLANCE

2 ADJOINING MEETING ROOMS

1,055 SQ FT IN TOTAL

BUILT IN AUDIO VISUAL

ACCESS TO PREFUNCTION SPACES



AMBASSADOR	SQ FT	DIMENSIONS	HEIGHT	THEATER	CLASSROOM	ROUNDS	RECEPTION	CONFERENCE	U-SHAPE	HOLLOW SQUARE	EXHIBITS 10x10
AMBASSADOR MEETING ROOMS	1,055	27' X 39'	11'	90	50	60	60	25	25	32	4
AMBASSADOR I	555	27' X 19'	11'	25	15	20	38	8	12	15	N/A
AMBASSADOR II	500	27' x 20'	11'	25	15	20	38	8	12	15	N/A



LA CONCHA

AT A GLANCE

HARD-WALLED MEETING ROOM

920 SQ FT IN TOTAL

BUILT IN AUDIO-VISUAL

ACCESS TO PREFUNCTION SPACES



LA CONCHA	SQ FT	DIMENSIONS	HEIGHT	THEATER	CLASSROOM	ROUNDS	RECEPTION	CONFERENCE	U-SHAPE	HOLLOW SQUARE	EXHIBITS 10x10
LA CONCHA	920	26' X 36'	11'	75	50	50	65	18	25	32	N/A

BONANZA OFFICE

AT A GLANCE

HARD-WALLED OFFICE SPACE

192 SQ FT IN TOTAL



BONANZA	SQ FT	DIMENSIONS	HEIGHT	THEATER	CLASSROOM	ROUNDS	RECEPTION	CONFERENCE	U-SHAPE	HOLLOW SQUARE	EXHIBITS 10x10
BONANZA OFFICE	192	10' X 12'	11'	N/A	N/A	N/A	N/A	N/A	N/A	N/A	N/A



# BALLROOMS & MEETING SPACES

## PREFUNCTION

### AT A GLANCE

OPEN COMMON AREAS OUTSIDE OF  
BALLROOMS AND MEETING ROOMS

11,608 SQ FT IN TOTAL



# BALLROOMS & MEETING SPACES

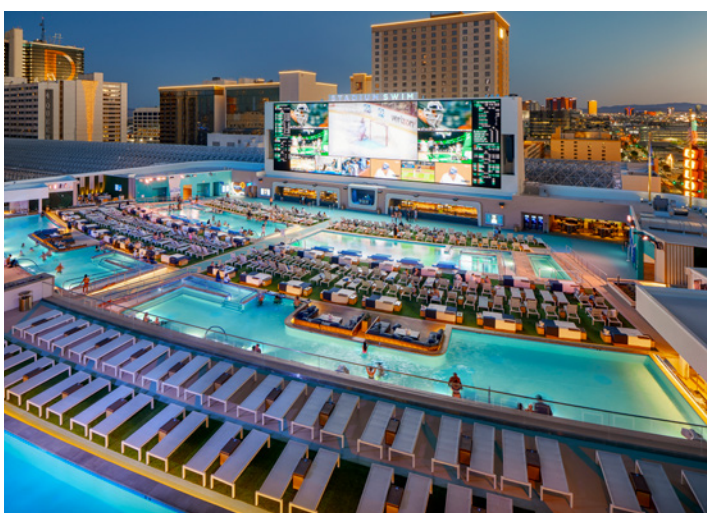
BALLROOM & MEETING SPACES FLOOR MAP



- Retractable Wall
- Meeting Rooms
- Ballrooms



# STADIUM SWIM



## AT A GLANCE

OPEN 365 DAYS A YEAR • CAPACITY OF 4,000 PEOPLE

MASSIVE 143FT HIGH RESOLUTION SCREEN

28 CABANAS • 2 OWNERS SUITES

337 CHAISE LOUNGES • 38 DAYBEDS • 8 LILY PADS

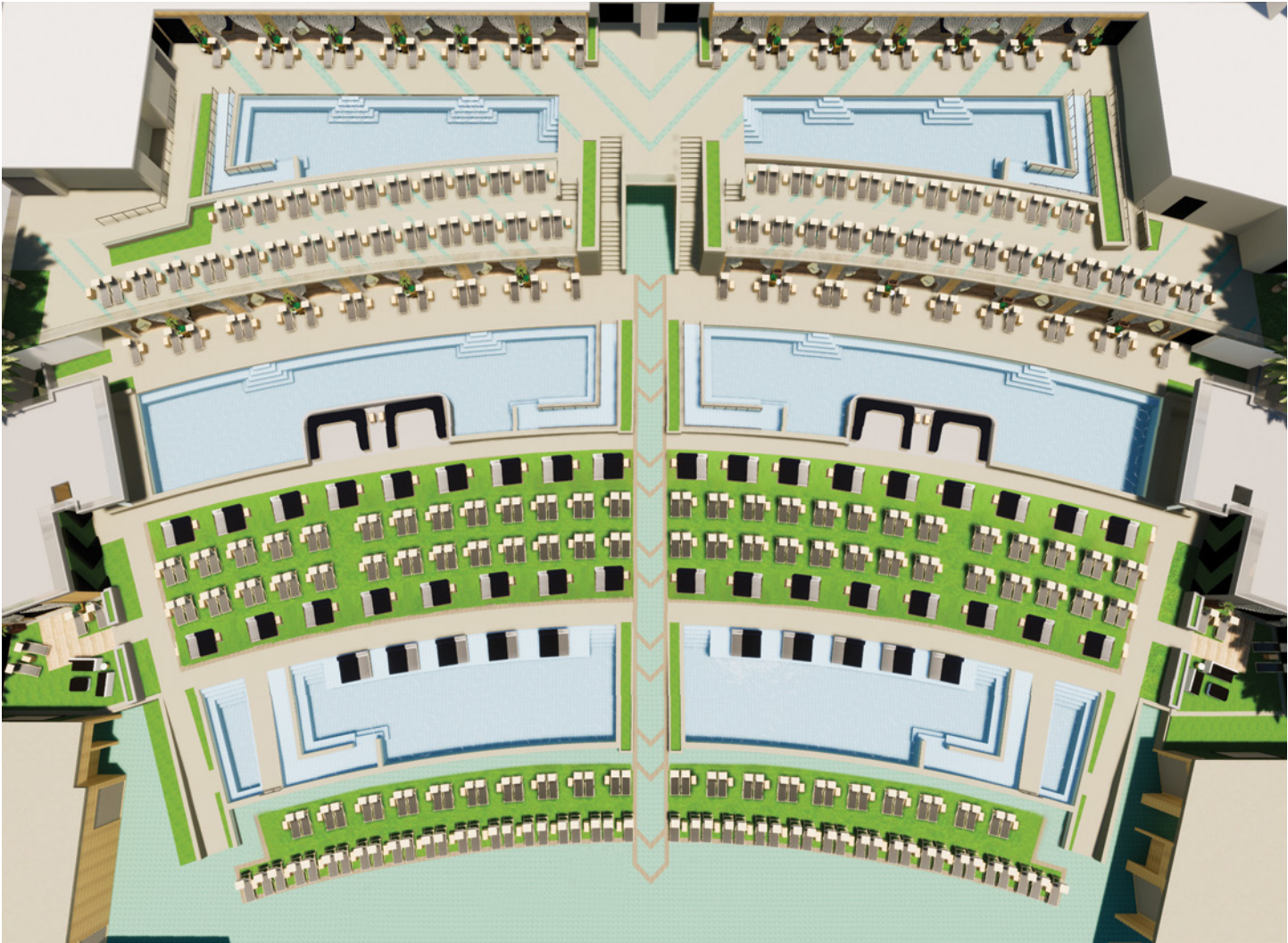
Sections of Stadium Swim can be purchased for semi-private events or full buyouts for a private event can be purchased for groups up to 4,000 with a food and beverage minimum.

Full control of the high-resolution digital screen available for full buyouts. The two front pools closest to the digital screen can be covered for extra standing/seating room.





# STADIUM SWIM





# LEGACY CLUB



## AT A GLANCE

9,330 SQUARE FEET

---

CAPACITY: 200 SEATED OR 400 STANDING

---

PRIVATE AND SEMI-PRIVATE EVENTS

---

LARGE ROOFTOP BAR AND OUTDOOR TERRACE

---

CUSTOMIZABLE SEATING

---

Legacy Club is a celebration of style and excess, inspired by the dreamers who built this city. Experience gorgeous sunsets and signature cocktails by fire pits on the outdoor terrace. Watch Las Vegas light up before your eyes atop the 60th floor of Circa Resort and Casino.

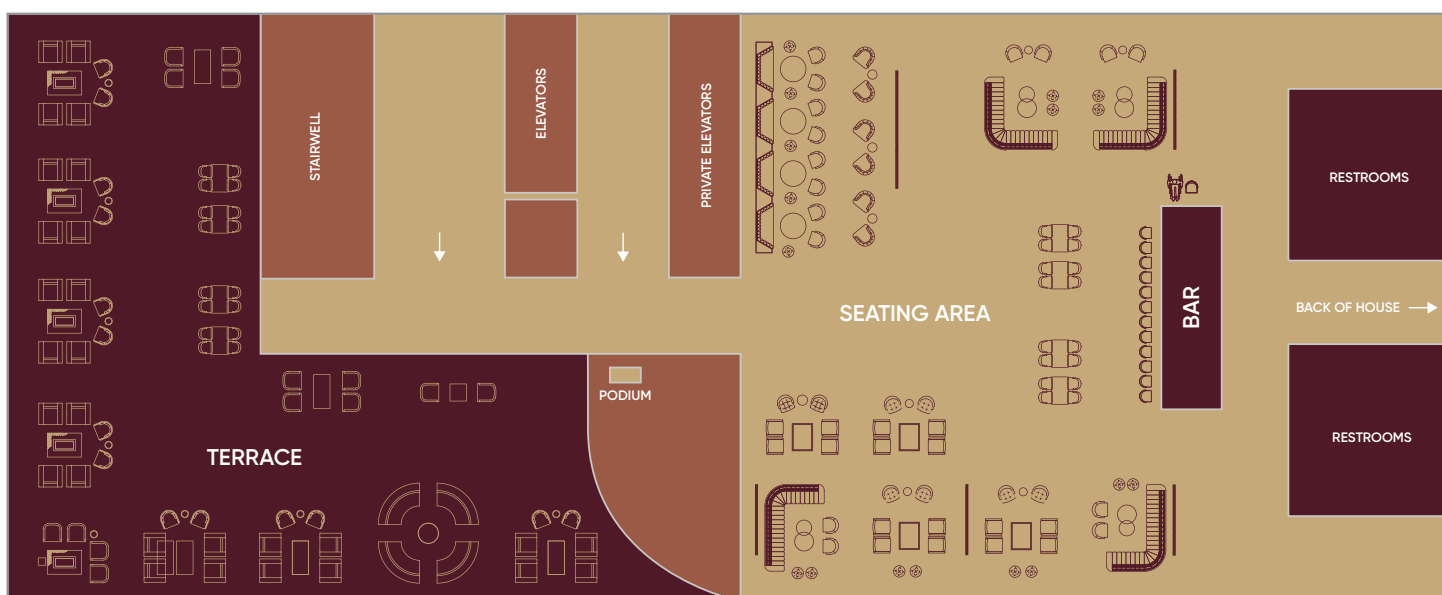
Dress code strictly enforced.

Option to have entertainment are available for buyouts.

# LEGACY CLUB

ROOFTOP COCKTAILS

# LEGACY CLUB

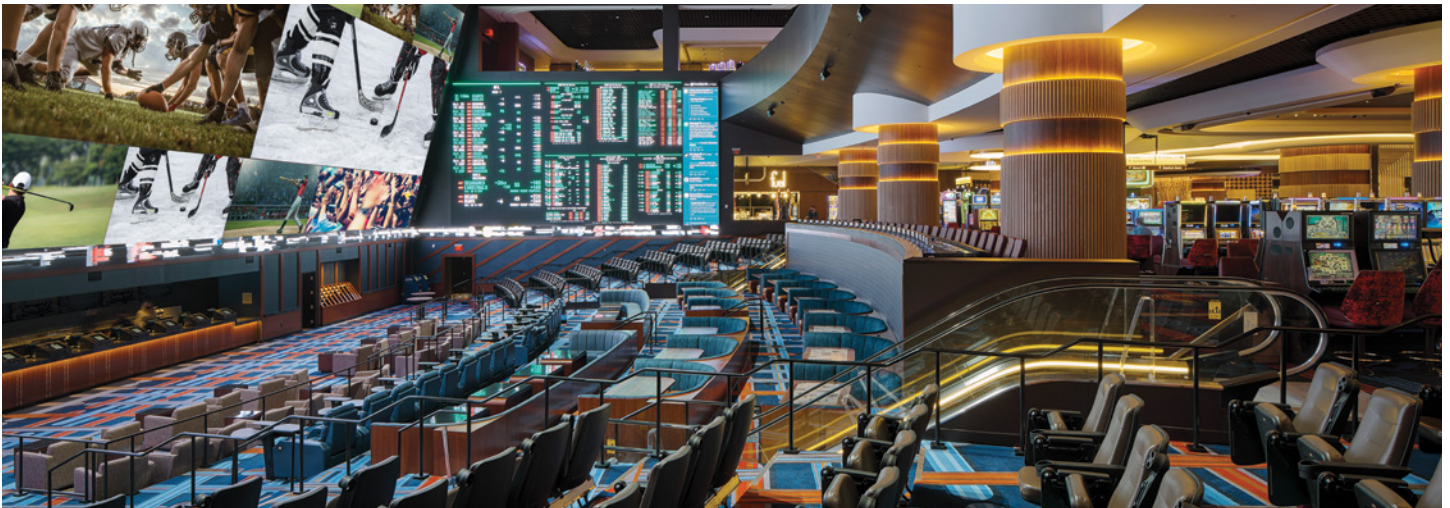


**OUTDOOR:**  
3,450 SQ FT

**INDOOR:**  
5,880 SQ FT



# WORLD'S LARGEST SPORTSBOOK



## AT A GLANCE

3 STORIES • 78 MEGAPIXEL SCREEN

28 LEVEL ONE & 44 LEVEL TWO BAR TOP GAMES

1,000 PERSON VIEWING CAPACITY

350 CAPACITY STADIUM SEATING

IDEAL FOR SPORTS BETTING GROUPS

Back in the day, your sportsbook knew your name, your favorite team, where the steam was, wrote your ticket by hand, and paid you with a smile when you won. We've combined the personalized experience with the most advanced technology inside the largest sports betting experience in the world.

For your sports groups, you can reserve an entire section.

*Circa* | SPORTS™



# OVERHANG BAR



## AT A GLANCE

POSITIONED ABOVE CIRCA'S MULTI-LEVEL SPORTSBOOK

OVERHANG LEDGE WITH POKER MACHINES

CAPACITY: 125

SECTIONED OFF FOR GROUPS

CATERING AVAILABLE

Positioned above Circa's multi-level sportsbook, Overhang Bar offers a front-row seat for the book's massive high-definition screen, measuring 78-million pixels. Ideal for sports fans looking to grab a drink while wagering on their favorite team through Circa Sports, this space will include an overhang ledge lined with poker machines and give onlookers a bird's eye view of the action. Deep walnut high-top tables will line the long edge of the bar while two wood columns with gold accents anchor the opposite side.

OVERHANG  
BAR



# VEGAS VICKIE'S



## AT A GLANCE

CAPACITY: 130

VINTAGE COCKTAILS & SEASONAL LIBATIONS

VEGAS VICKIE OVERLOOKING THE BAR

COCKTAIL ONLY EVENTS

Circa's elevated lobby cocktail lounge surrounds the iconic neon Vegas Vickie sign. Making her grand return to Downtown Las Vegas, the celebrated kicking cowgirl first appeared on the dazzling Downtown landscape in 1980 and became a must-see landmark on the Fremont Street Experience. With the goal of uniting old and new Vegas in never-before-seen ways, Stevens acquired the sign in 2016 with the intent to give Vickie a new home at Circa. After a fresh makeover, Vegas Vickie will reside in Circa's lobby at her namesake bar.





# PROJECT BBQ



## AT A GLANCE

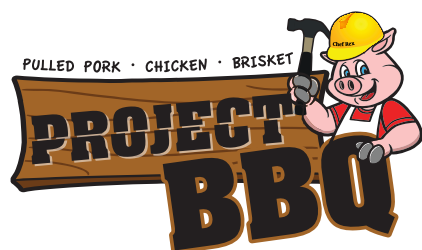
“FRONT YARD” ACCOMMODATES UP TO 50 PEOPLE

GROUP DINING

STREET-STYLE GRAB & GO

LOCATED RIGHT ON FREMONT ST.

Chef Rex Bernales’ Project BBQ is the Fremont Street Experience’s only permanent food truck and its first Carolina barbecue joint. Relax in the “backyard” while you feast on freshly smoked BBQ, including the signature Garbage Bowl – handmade potato chips smothered in smoked meats, coleslaw, bacon and a trio of Carolina BBQ, beer and cheese sauces.





# RESTAURANT PARTNERS



## 8 EAST

INSPIRED BY METROPOLITAN ASIAN FOOD MARKETS

CUTTING-EDGE TAKE ON PAN-ASIAN CUISINE

SHARABLE DISHES LIKE POT STICKERS AND DUMPLINGS



## BARRY'S DOWNTOWN PRIME

VINTAGE GLAMOUR AND HOSPITALITY

CHEF BARRY DAKAKE'S NEW CLASSIC STEAKHOUSE

FINEST STEAKS AND SEAFOOD, CREATIVE COCKTAILS



## JACKPOTS

MODERN COFFEE STAND WITH VEGAS FLAIR

SERVING MICHIGAN'S OWN ZINGERMAN'S COFFEE

SELECTION OF BREAKFAST ITEMS AND SANDWICHES

# RESTAURANT PARTNERS



## SAGINAW'S DELICATESSEN

FROM PAUL SAGINAW, CO-FOUNDER ZINGERMAN'S DELI

SANDWICHES SO BIG, YOU'LL NEED  
TWO HANDS TO EAT THEM

WORLD-FAMOUS REUBEN AND BREAKFAST



## VICTORY BURGER & WINGS CO.

THE ULTIMATE SPORTS BAR

DEVELOPED BY THE FAMILY OF AMERICAN CONEY ISLAND

MOUThWATERING BURGERS, WINGS AND APPETIZERS

Call 702.726.5500 or visit [CircaLasVegas.com](http://CircaLasVegas.com) to make a reservation.

Management reserves all rights.



# PRIVATE DINING



8 EAST

## AT A GLANCE

FOR GROUPS UP TO 16 PEOPLE

FOOD & BEVERAGE MINIMUM REQUIRED

EQUIPPED WITH A FULLY ACCESSIBLE 75" TV

Call 702.726.5500 or visit [CircaLasVegas.com](http://CircaLasVegas.com) to make a reservation.

Management reserves all rights.

# PRIVATE DINING



**VICTORY  
BURGER**   
OWINGS

## AT A GLANCE

FOR GROUPS UP TO 10 – 15 PEOPLE

FOOD & BEVERAGE MINIMUM REQUIRED

UNRIVALED VIEWS OF THE WORLDS LARGEST SPORTSBOOK

Call 702.726.5500 or visit [CircaLasVegas.com](https://CircaLasVegas.com) to make a reservation.

Management reserves all rights.



# PRIVATE DINING



*Barry's*

**DOWNTOWN PRIME**  
Steaks & Cocktails

## AT A GLANCE

A VARIETY OF PRIVATE DINING SPACES AVAILABLE WITH  
CAPACITIES UP TO 52 SEATED AND 72 STANDING

FOOD & BEVERAGE MINIMUM REQUIRED

THEMED ROOMS AVAILABLE

Call 702.726.5500 or visit [CircaLasVegas.com](http://CircaLasVegas.com) to make a reservation.

Management reserves all rights.



# ACCOMMODATIONS



## HOSPITALITY SUITES

Indulge in the suite life with our upscale Hospitality Suites. With 1,274 – 1,603 sq ft of space you can host your next special occasion or in-suite business meeting in style. Featuring a conference table for 8 – 10 people, bar seating for up to 7, seating areas, a pullout sleeper couch with a king bed Serta Chateau mattress.





# ACCOMMODATIONS

## AT A GLANCE

1,274 – 1,603 SQ FT

BAR SEATING FOR 4 TO 7

CONFERENCE TABLES FOR 8 TO 10

SEATING AREAS • FULL BATHROOMS

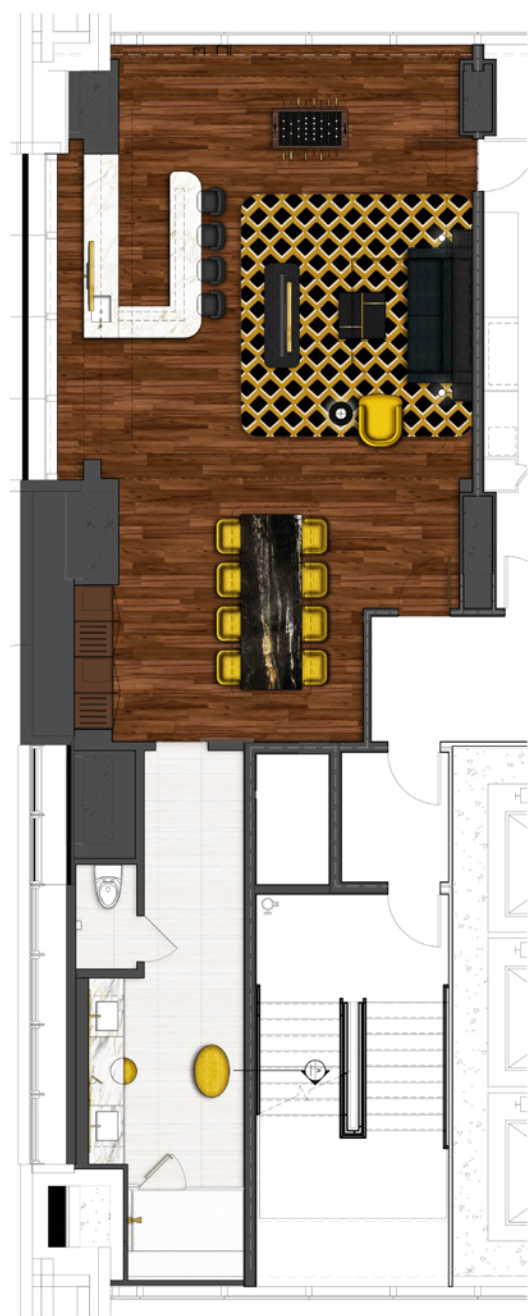
CONVERTIBLE COUCH SLEEPER W/ KING BED

OPTIONAL CONNECTING ROOM W/ DOUBLE KINGS

### HOSPITALITY SUITE 1



### HOSPITALITY SUITE 2

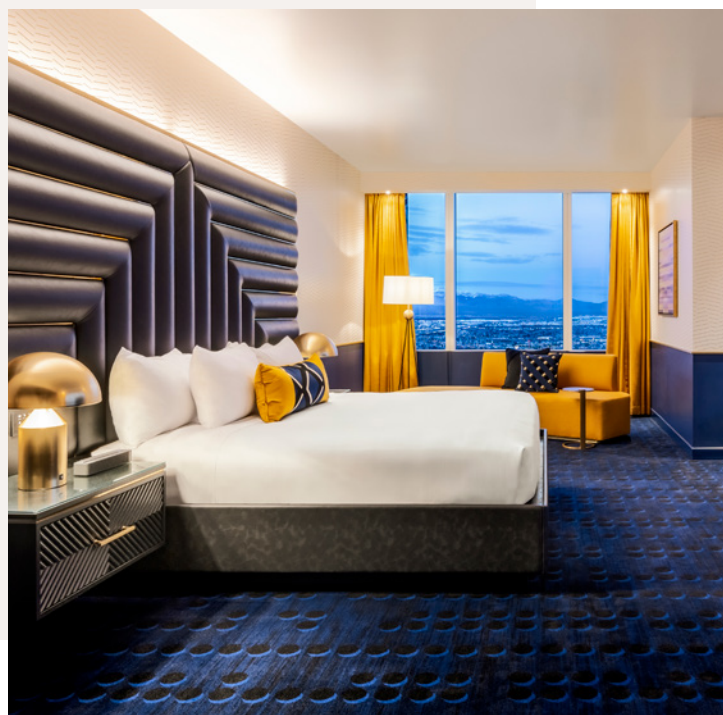


# ACCOMODATIONS



## PANORAMIC SUNRISE SUITE

Combining comfort and luxury with stunning views of the Las Vegas skyline, the Panoramic Sunrise Rise Suites provides 1,548 sq ft of luxury executive meeting space, featuring a king bed with a Serta Chateau mattress and a living room with a wet bar, dining table and convertible couch.





# ACCOMMODATIONS



## BUNK SUITE

Squad up in the 1,362 square foot Bunk Suite, featuring two sets of bunk beds, a living room wet bar, plenty of space to get ready with a dual vanity and a walk-in shower.





# ACCOMMODATIONS



## FOUNDERS SUITE

Waking up in Vegas is glamorous in the 1,830 square foot Founders Suite, featuring two bedrooms with Serta Chateau mattresses, an additional half bath, and a living room with a bar, a full refrigerator and electric fireplace.





# ACCOMMODATIONS

## CIRCA SUITE

The Circa Suite gives you 867 square feet of space, perfect couples getaway or solo adventure. Featuring a king bed with a Serta Chateau mattress and a living room with a wet bar, dining table and convertible couch.



## CORNER STUDIO

Take in spectacular sunrise or sunset views from the Corner Studio. Featuring 529 square feet of space, a king bed with a Serta Chateau mattress, a couch, a dual vanity and a walk-in shower.



# ACCOMODATIONS

## SINGLE KING

The 439 square foot Single King room features a king bed with a Serta Prestige mattress, a comfortable couch, a dual bathroom vanity and your own refrigerator. Rooms come with a variety of views to choose from.



## DOUBLE KING

We are the first hotel in Las Vegas to offer king sized beds in our double occupancy rooms. All Double King rooms are outfitted two king Serta Prestige mattresses and features a dual vanity in the bathroom and a mini refrigerator.





## MAKE HISTORY AND LEAVE A LEGACY

Corporate events, special celebrations, birthdays and weddings, we're here to provide you with plenty of room for fun. Our team goes above and beyond to provide your guests with a custom catering experience with limitless menu options, plenty of flexible space, 15 ballroom and meeting spaces, and the finest Audio/Visual solutions, we have you covered.

ALL GUESTS OF PROPERTY MUST BE  
21 YEARS OR OLDER AND HAVE A VALID I.D.

10% DISCOUNT AT  
JACKPOTS COFFEE SHOP

FREE EARLY ENTRY ACCESS  
TO STADIUM SWIM WITH  
HOTEL ACCOMMODATIONS

YOUR BOOKING WILL ALSO INCLUDE ALL RESORT  
AMENITIES AT OUR SISTER PROPERTIES  
GOLDEN GATE AND THE D.

ACCESS TO THE  
24 HOUR FITNESS CENTER

LOCAL AND TOLL-FREE CALLS  
FROM YOUR GUEST ROOM

FOR INQUIRIES OF GROUPS 10 OR MORE,  
PLEASE CONTACT [SALES@CIRCALASVEGAS.COM](mailto:SALES@CIRCALASVEGAS.COM)

